

Bone Substitute Portfolio





Company Overview

- JRI Limited, established in 1970 by Mr Ronald Furlong, FRCS
- First H-AC coated hip replacement in the world
– Furlong® H-AC 9th September 1985
- Market leading peer reviewed clinical results
- Dedicated orthopaedic research, development and manufacture
- Wholly owned by the Furlong Research Charitable Foundation who independently fund orthopaedic research



THE FURLONG RESEARCH
CHARITABLE FOUNDATION



 Contents

Bone Substitute Portfolio:



3



4



5

Repros™

6



Bone Substitute Portfolio:



SINTLIFE

Mg-hydroxyapatite

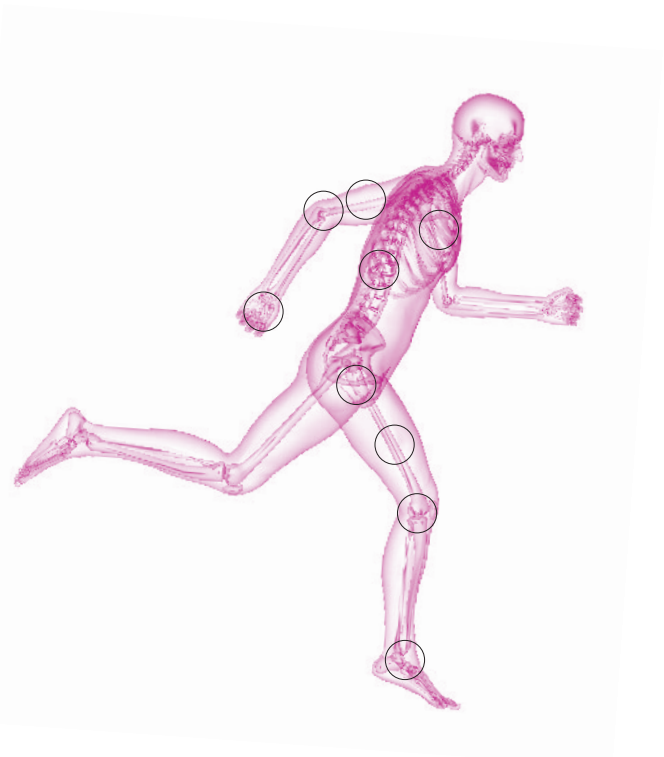


Suggested indications for use	Granules	Paste & Putty
TRAUMA	yes	yes
REVISION SURGERY	yes	yes
SPINAL	no	recommended
TUMOUR	yes	yes
CAVITY DEFECTS	yes	recommended
SMALL JOINTS	no	yes

SINTLIFE

Biomimetic Mg-hydroxyapatite in microgranules or paste/putty form

Code	Description	Quantity
PFS015055-26-00	Microgranules (size 600-900 µm)	5 cc
PFS015055-13-00	Microgranules (size 600-900 µm)	15 cc
PFS015055-59-00	Nanostructured Paste (syringe)	2,5
PFS015055-57-00	Nanostructured Paste (syringe)	5 cc
PFS015056-01-00	Nanostructured Putty (syringe)	1 cc
PFS015056-02-00	Nanostructured Putty (syringe)	2,5
PFS015056-00-00	Nanostructured Putty (syringe)	5 cc
PFS015056-03-00	Nanostructured Putty (syringe)	2 x 5 cc



REGENOSS
Collagen-hydroxapatite



Suggested indications for use	Patches and Strips
TRAUMA	yes
REVISION SURGERY	recommended
SPINAL	yes
TUMOUR	yes
CAVITY DEFECTS	yes
SMALL JOINTS	yes



REGENOSS
Collagen-hydroxapatite

Code	Description	Quantity
01600815	Patch (15 x 15 x 5 mm)	1
01600816	Patch (35 x 35 x 5 mm)	1
01600819	Patch (75 x 75 x 5 mm)	1
01600817	Strip (25 x 50 x 10 mm)	1
01600818	Strip (25 x 75 x 5 mm)	1

ENGIPORE

High porosity hydroxyapatite

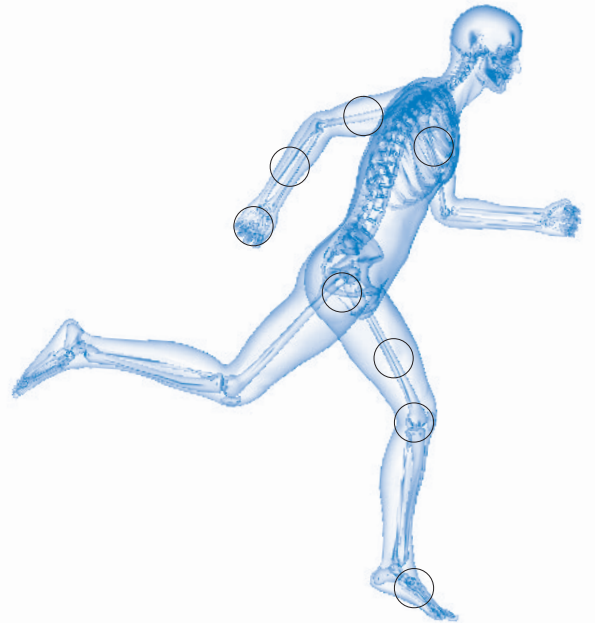


Suggested indications for use	Chips	Blocks
TRAUMA	small defects	large defects
REVISION SURGERY	yes	yes
SPINAL	no	no
TUMOUR	yes	yes
CAVITY DEFECTS	yes	recommended
SMALL JOINTS	recommended	yes

ENGIPORE

(High porosity Hydroxyapatite-based chips and 3D forms)

Code	Description	Quantity
PFS015005-40-00	Chips (size 1,0-2,5 mm)	5 cc
PFS015005-41-00	Chips (size 1,0-2,5 mm)	15 cc
PFS015005-50-00	Chips (size 2,5-4,0 mm)	5 cc
PFS015005-51-00	Chips (size 2,5-4,0 mm)	15 cc
PFS015005-52-00	Chips (size 2,5-4,0 mm)	30 cc
PFS015005-21-00	Block (dimension 10x10x12 mm)	1
PFS015005-22-00	Block (dimension 20x10x12 mm)	1
PFS015005-23-00	Block (dimension 30x20x12 mm)	1
PFS015005-24-00	Block (dimension 40x20x12 mm)	1
PFS015005-30-00	Wedge (dimension 40x30 mm incl. 11°)	1
PFS015005-31-00	Wedge (dimension 40x30 mm incl. 15°)	1
PFS015005-32-00	Wedge (dimension 40x30 mm incl. 19°)	1
PFS015006-19-00	Wedge (dimension 30x15 mm incl. 11°)	2
PFS015006-20-00	Wedge (dimension 30x15 mm incl. 15°)	2
PFS015006-25-00	Wedge (dimension 30x15 mm incl. 9°)	2
PFS015008-01-00	Hollow cylinder (eD=12mm iD=3mm h=40mm)	1
PFS015008-02-00	Hollow cylinder (eD=15mm iD=3mm h=40mm)	1
PFS015008-03-00	Hollow cylinder (eD=18mm iD=3mm h=40mm)	1



Repros™

REPROS
60% Hydroxyapatite
40% beta-tricalciumphosphate



Suggested indications for use	Granules	Blocks
TRAUMA	small defects	large defects
REVISION SURGERY	yes	yes
SPINAL	no	no
TUMOUR	yes	yes
CAVITY DEFECTS	yes	yes
SMALL JOINTS	yes	no

REPROS Hydroxyapatite/ beta-tricalciumphosphate Granules		
Code	Description	Quantity
500.01.02	Granules (size 1.0-4.0mm) non-resorbable	2 cc
500.00.05	Granules (size 1.0-4.0mm)	5 cc
500.01.05	Granules (size 1.0-4.0mm) non-resorbable	5 cc
500.00.10	Granules (size 1.0-4.0mm)	10 cc
500.00.15	Granules (size 1.0-4.0mm)	15 cc
500.00.30	Granules (size 1.0-4.0mm)	30 cc
500.02.05	Granules (size 0.5-1mm)	5 cc
500.02.15	Granules (size 0.5-1mm)	15 cc
Hydroxyapatite/ beta-tricalciumphosphate Blocks		
510.05.05	Block (dimension 10x05x05mm)	1
510.10.10	Block (dimension 10x10x10mm)	1
510.10.40	Block (dimension 10x10x40mm)	1
520.15.08	Block (dimension 20x15x08mm)	1
525.25.12	Block (dimension 25x25x12mm)	1
530.08.08	Block (dimension 30x08x08mm)	1
540.12.05	Block (dimension 40x12x05mm)	1
550.20.10	Block (dimension 50x20x10mm)	1





18 Churchill Way, 35A Business Park, Chapelton, Sheffield S35 2PY

T: 0114 345 0000 F: 0114 345 0004 W: www.jri-ltd.co.uk

CE 0473
REPROS

CE 0373
REGENOSS
ENGIPORE
SINTLIFE

CCG/VS01/08/2010